

4 Shelly Avenue Lismore

Table of Contents

- | [Property Details](#)
- | [Photo Gallery](#)
- | [Map](#)
- | [Contact For Inspection](#)

Property Details

4 Shelly Avenue, Lismore



TOO GOOD TO BE TRUE!

4  2  2 

Nestled on an elevated, leafy block, this versatile property offers endless possibilities. Whether you're seeking a dual-living arrangement or a spacious home for the whole family, this residence is designed to cater to your needs.

Key Features:

- ◆ 4 bedrooms, all with built-in robes
- ◆ 2 well-appointed bathrooms
- ◆ 2 fully equipped kitchens, ideal for extended family

- ◆ 2 separate laundries for added convenience
- ◆ 2 carports providing ample parking space
- ◆ A handy lawn locker for storage
- ◆ A welcoming front porch, perfect for enjoying your morning coffee

Additional highlights include air-conditioning, ceiling fans, wooden floorboards ensuring comfort and practicality.

Located just minutes from local amenities, including hospitals, schools, shopping centers, sporting fields and medical facilities, this property offers both convenience and tranquility.

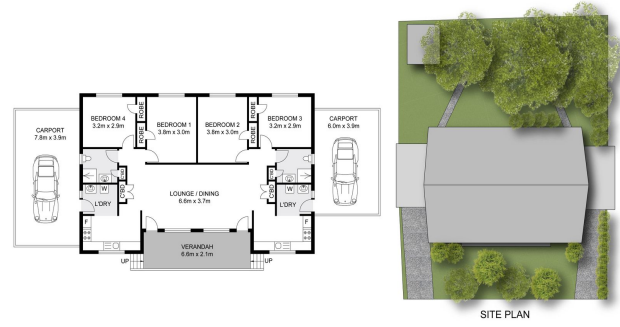
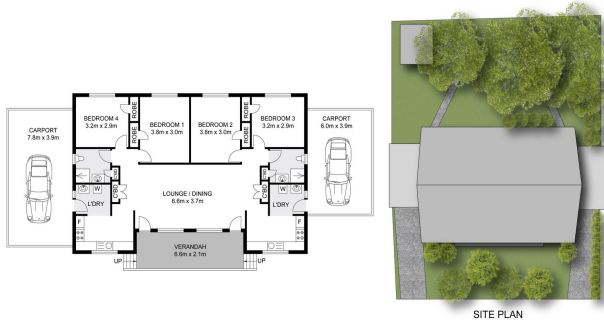
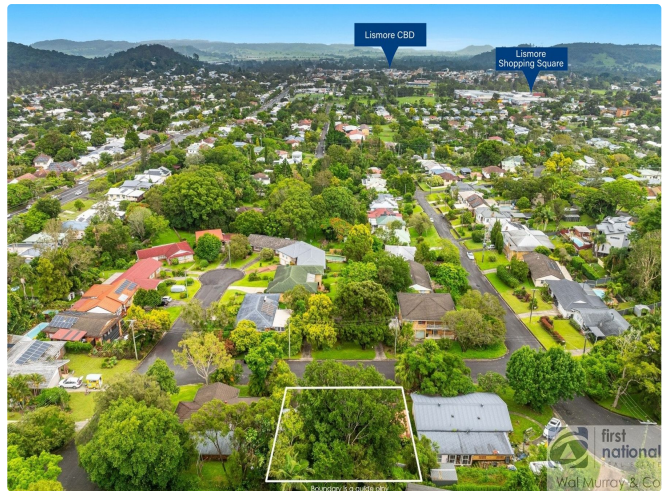
Whether you're looking to accommodate a large family or dual living arrangements, this property presents a unique chance to enjoy a flexible lifestyle in a sought-after area.

- 4 Bedrooms
- 2 Bathrooms
- 2 Carports
- Air Conditioning
- Floor boards
- Built In Robes

\$649,000

Photo Gallery





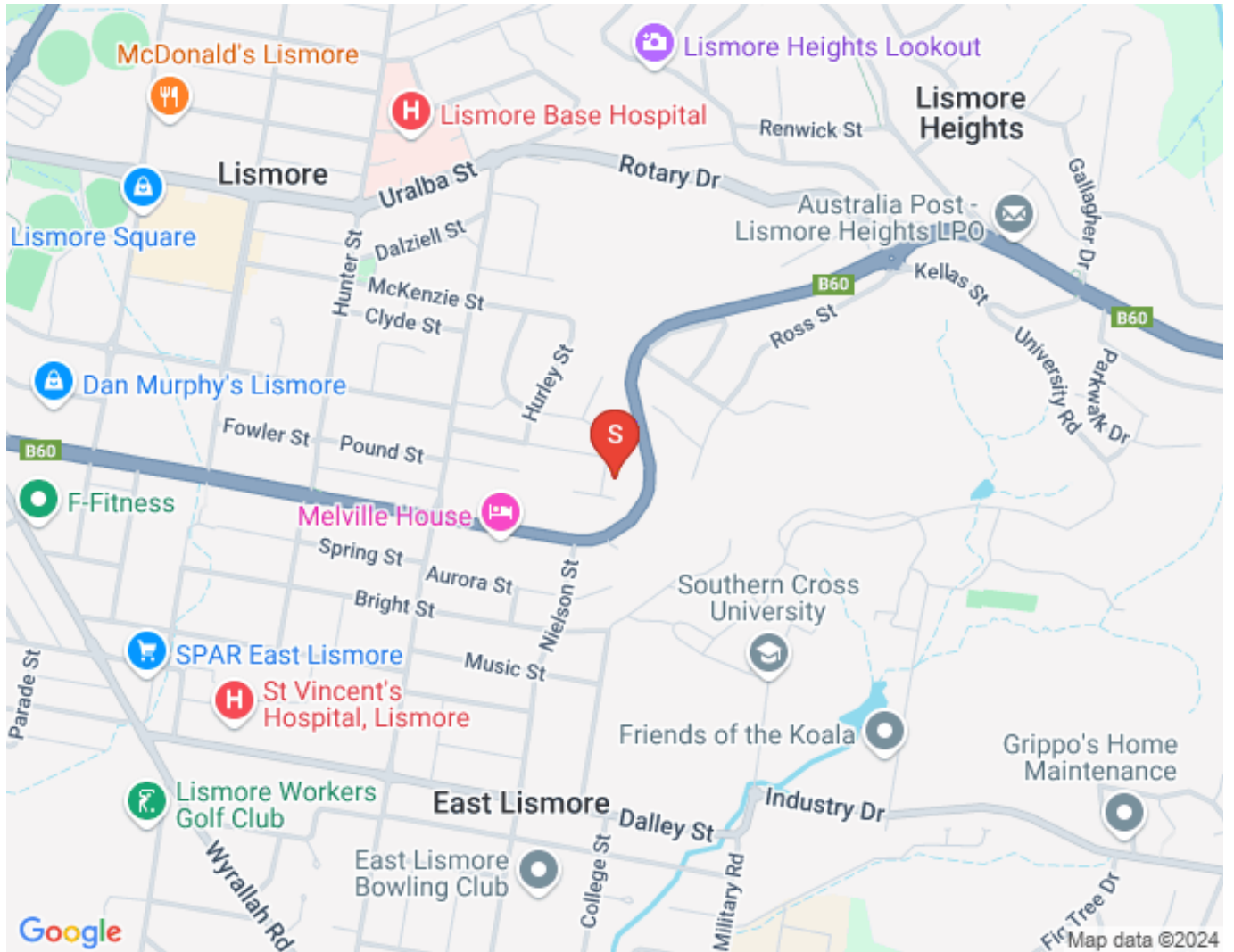
INT : 114.4m²
 EXT : 13.7m²
 CARPORT : 53.8m²

4 Shelly Avenue, Lismore

INT : 114.4m²
 EXT : 13.7m²
 CARPORT : 53.8m²

4 Shelly Avenue, Lismore

Map



Contact For Inspection



KAYE MCGRATH

LICENSED REAL ESTATE AGENT

0427 458 574

kaye@walmurray.com.au